

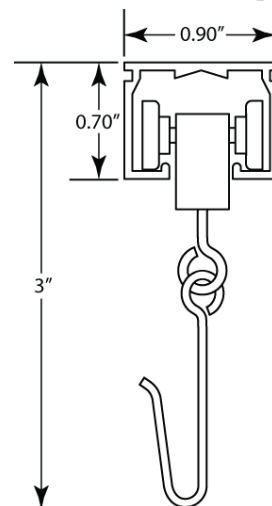
# CUBICLE TRACKING AND PARTS DESCRIPTIONS

## 6000 SERIES

### GENERAL DESCRIPTIONS

#### **Cubicle Track**

Cubicle track system shall be Diamond Drapery Model Number 6000 which is equivalent to Kirsch 9600 series complete with 29/32" x 11/16". 6000 Series cubicle track is extruded anodized aluminum track channel, 6063-T5 with carriers, end stops, and other required accessories for a complete and operational track system. Inner surface is center ridge-grooved for easy installation. Track channel available either curved or straight in continuous lengths up to 16 feet. Bends will have an approximate 12 inch (308mm) radius.



### COMPONENT DESCRIPTIONS

#### **6000-01 Carrier with Hook**

Carrier shall be constructed of natural Celcon body and wheels. Eye and hook are fabricated from .093 bright basic wire, nickel plated.



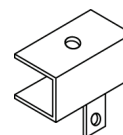
#### **6000-01HLT Carrier with Hook and Loop Tab**

Carrier shall be constructed of natural nylon body with molded in loop. Attached to the loop is a hook and loop covered tab designed for breakaway curtain attachment. Body supported from two natural nylon wheels fastened by plated steel rivet.



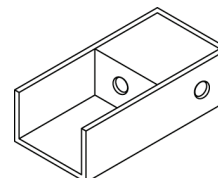
#### **6000-03 End Stop**

End stop of bright steel with machine screw for attachment to track.



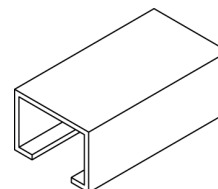
#### **6000-04 End Stop with Pull-Out**

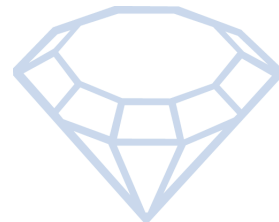
End stops of .032" minimum sheet aluminum die-formed with commercial clear anodized finish. Pull-out of .032" minimum sheet aluminum die-formed and anodized with commercial clear finish.



#### **6000-05 Splice**

Splice shall be made from extruded zinc/aluminum alloy.





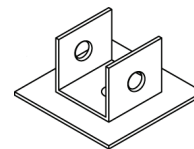
# CUBICLE TRACKING AND PARTS DESCRIPTIONS

## 6000 SERIES

### COMPONENT DESCRIPTIONS (CONTINUED)

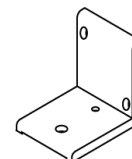
#### **6000-06 Ceiling Bracket – Suspension Mount**

Ceiling bracket constructed of sheet aluminum top and extruded 6063-T5 “U” channel. All aluminum parts have a commercial clear anodized finish.



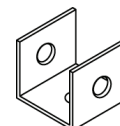
#### **6000-07 Track End Wall Bracket – Suspension Mount**

Wall bracket shall be made from extruded 6063-T5 aluminum with commercial clear anodized finish.



#### **6000-08 Track Bracket – Suspension Mount**

Track bracket shall be made from extruded 6063-T5 aluminum with commercial clear anodized finish.



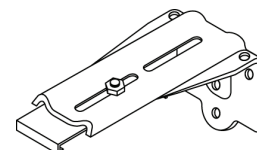
#### **6000-11 P.V.C. 16” Drop**

P.V.C. drop shall be constructed of .085” x .350” extruded white P.V.C. with attachment holes at each end. One end provided with nickel plated steel hook for curtain attachment.



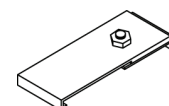
#### **6000-31 Wall Bracket, 3”**

Made of heavy gauge steel and combined with an aluminum track clip assembly, this wall bracket is designed with a 3” clearance to allow easy installation of track and curtains. The track clip secures the track into place utilizing the notches at the top of the 6000 series track.



#### **6000-32 Track Clip**

Made of aluminum, the track clip assembly is designed to allow quick and easy installation of track utilizing the notches at the top of the 6000 series track.



#### **6000-ST Suspension Tubing**

Suspension tubing shall be made from 3/4” x 3/4” x .063” extruded 6063-T5 aluminum with commercial clear anodized finish.

